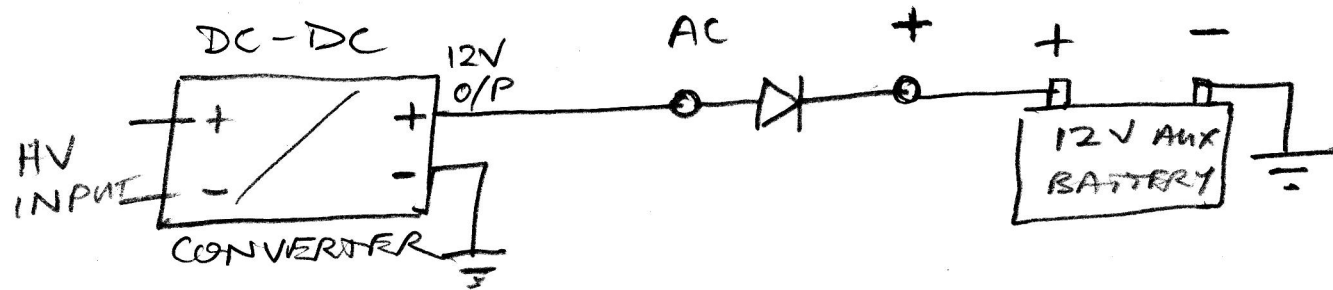


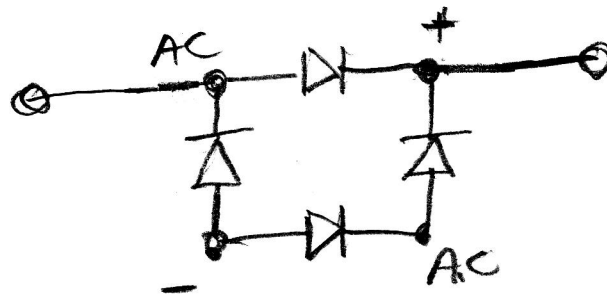
USING A SECTION OF A DIODE BRIDGE  
TO CONNECT A DC-DC CONVERTER  
TO A 12V AUX. BATTERY.



$\frac{1}{\text{---}} = \text{CHASSIS GROUND}$

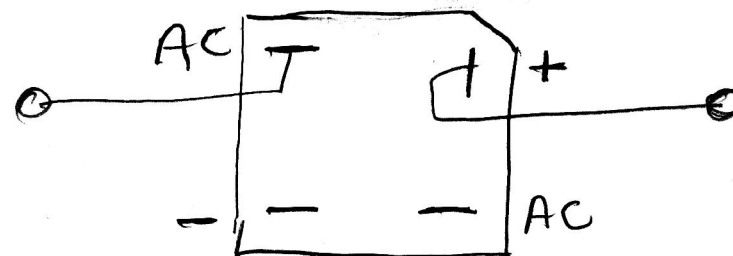
A DIODE BRIDGE BLOCK CONTAINS 4 DIODES  
OFTEN THE METAL BASED VARIETY ARE RATED 35A PLUS.

DIODE BRIDGE  
SCHEMATIC.



ONLY CONNECT TO  
"AC" + "+"  
LEAVE OTHER  
CONNECTIONS  
NOT CONNECTED.

DIODE BRIDGE  
PHYSICAL



(YOU HAVE 3  
SPARE DIODES  
IN CASE "AC" TO "+"  
FAILS.)